

Accessories for Block Loading Grabs

Quick Change Device SWV

The Quick-Change-Device (SWV) simplifies the suspension of all types of grabs, including those already available, from one crane or from various cranes in a fleet.

When using the SWV quick coupling or screw coupling should be used for high-pressure hoses.

- An enormous amount of setting up time can be saved by using this device if the grab has to be taken down after each load.
- By using the SWV the driver can change over the attachment without additional help.

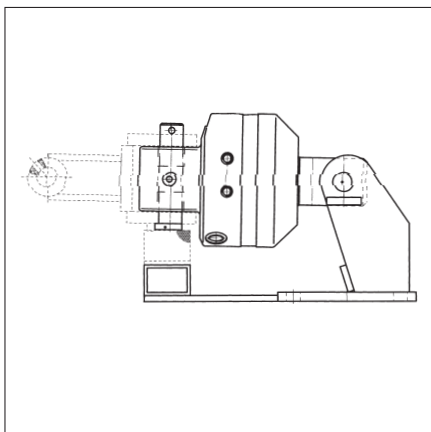
Type	Description	Dead Weight kg (lbs)	Order-Number
SWV below the rotator	The rotator remains on the cranes in normal circumstances	10 (20)	46200001
SWV above the rotator	rotator remains in clamp	10 (20)	46200002

Always state the type of rotator and crane when upon inquiry.

Suspension Link

Type	Description	Dead Weight kg (lbs)	Order-Number
Below the rotator		4 (9)	46200072
Above the rotator	for adapting various types of rotators to the grab and to the crane"	4 (9)	46200073

Always state the type of rotator and crane when upon inquiry.



Rotator Tilting Device

To limit the overall height of the vehicle.

Rotator Tilting Device

Type	Description	Dead Weight kg (lbs)	Order-Number
Rotator Tilting Device	rotator for shaft	10 (20)	46200071
Rotator Tilting Device	rotator for flange-connection	17 (35)	46200082