

max. 1,650 kg/3,650 lbs

POWERJET PJ-1650 Vacuum-Lifting Device

Large-sized concrete slabs with decorative surface finish as well as sandstone slabs may sometimes be very porous. The POWERJET PJ-1650 is especially designed for these kind of slabs.

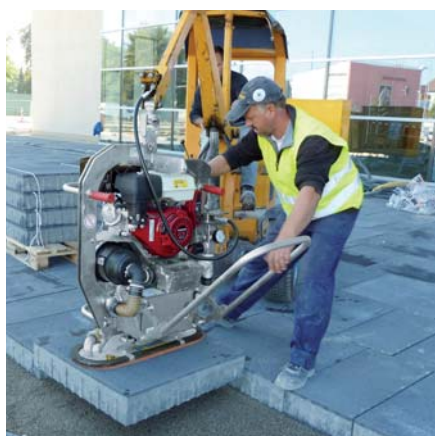
The enormous suction capacity of this series makes an efficient and safe installation of such porous slabs possible now. This enormous suction capacity is produced by a special vacuum blower for vacuum generation.

Can be attached to any carrier by means of load hook, chain, ropes etc.

Can be equipped with a hydraulic rotator as an add-on if requested.

- With intelligent, battery powered warning system.
- Highest working safety due to integrated chain safety device, so that even highly porous lifting material is protected in case of power failure.
- Ergonomic handles for guiding the PJ.
- Compact design.
- Including high-volume dust filter.
- Durable surface protection by galvanizing.
- Powered by integrated petrol engine with electric start, with integrated manually operated suction release device.
- Optional features: radio remote control of the suction release device PJ-B-FFS or alternatively hydraulically operated suction release device PJ-B-HAE.
- With one of these two options, the vacuum lifting device becomes fully one-man operation. The operator controls the activation and release of suction from the drivers seat.

PJ-1650-H: Powered by the hydraulic system of the carrier, standard equipment includes hydraulically operated suction release device, the operator controls the activation and release of suction from the drivers seat.



PJ-1650-B



PJ-1650-H



PJ with PJ-RS

Type	Type of Drive hydraulic kW	Type of Drive Petrol Engine kW	Dead Weight kg (lbs)	Hydr. Backflow Pressure, max bar (psi)	Hydr. Volumetric Flow l/min (gpm)	Hydraulic Connection Pressure, min bar (psi)	Working Load Limit/WLL -400 mbar kg (lbs)	Order-Number
PJ-1650-B		6.6	132 (291)				1,650 (3,638)	52400036
PJ-1650-H	5.0		117 (258)	10 (145.04)	16 – 70 (4.23 – 18.49)	200 – 320 (2,901 – 4,641)	1,650 (3,638)	52400038

Accessories:

PJ-RS: Transport Trolley suitable for PJ-1650-B and -H. For using the POWERJET device as mobile vacuum unit on site. Safe transport.

Type	Description	Dead Weight kg (lbs)	Order-Number
PJ-RS	Transport trolley for PJ-1650-B and -H.	20.1 (44)	42400497
PJ-B-FFS	Radio remote control for suction release for PJ-1650-B	0.5 (1.10)	42400502
PJ-B-HAE	Hydraulic release device, carrier has to provide one separate hydraulic circuit for proper connection. Inclusive Hydraulic hose. For operation w/VM-X/401/301/203.	1.12 (2.47)	41900122
PJ-B-HAE	Hydraulic release device, carrier has to provide one separate hydraulic circuit for proper connection. Inclusive Hydraulic hose. For operation w/excavator.	1.32 (2.91)	41900123