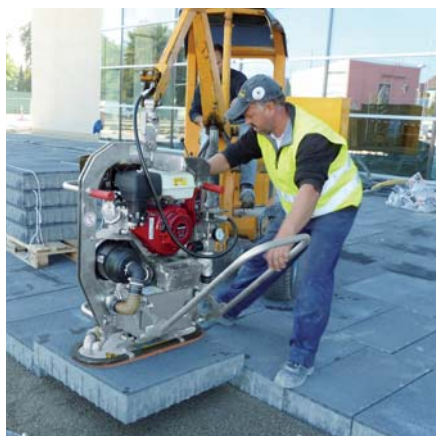




max. 1,650 kg/3,650 lbs

## POWERJET PJ-1650 Vacuum-Lifting Device



PJ-1650-B



PJ-1650-H



PJ with PJ-RS

Large-sized concrete slabs with decorative surface finish as well as sandstone slabs may sometimes be very porous. The POWERJET PJ-1650 is especially designed for these kind of slabs.

The enormous suction capacity of this series makes an efficient and safe installation of such porous slabs possible now. This enormous suction capacity is produced by a special vacuum blower for vacuum generation.

Can be attached to any carrier by means of load hook, chain, ropes etc.  
Can be equipped with a hydraulic rotator as an add-on if requested.

- With intelligent, battery powered warning system.
- Highest working safety due to integrated chain safety device, so that even highly porous lifting material is protected in case of power failure.
- Ergonomic handles for guiding the PJ.
- Compact design.
- Including high-volume dust filter.
- Durable surface protection by galvanizing.
- Powered by integrated petrol engine with electric start, with integrated manually operated suction release device.
- Optional features: radio remote control of the suction release device PJ-B-FFS or alternatively hydraulically operated suction release device PJ-B-HAE.

**PJ-1650-H:** Powered by the hydraulic system of the carrier, standard equipment includes hydraulically operated suction release device, the operator controls the activation and release of suction from the drivers seat.

Type	Type of Drive Petrol Engine kW	Type of Drive hydraulic kW	Dead Weight kg (lbs)	Hydr. Backflow Pressure , max. bar (psi)	Hydraulic Connection Pressure bar (psi)	Hydr. Volumet- ric Flow l/min (gpm)	Hydraulic Connection Pressure, min. bar (psi)	Working Load Limit/WLL -400 mbar kg (lbs)	Order-Number
PJ-1650-B	6.6		132 (291)					1,650 (3,638)	52400036
PJ-1650-H		5.0	117 (258)	10 (145.04)	200 (2,901)	16 – 70 (4.23 – 18.49)	200 – 320 (2,901 – 4,641)	1,650 (3,638)	52400038

011223 Technical data contained in this catalogue can be modified without prior notice in the interest of progress. Illustrations are exemplary and non-binding. No liability accepted for any misprints, mistakes and errors. \* Details in the general sales conditions at the end of the catalogue or at www.probst-handling.com/en/gtc